



## Bryn Meadows Golf and Country Club

### Access Statement

This access statement does not contain personal opinions as to the suitability for those with access requirements, but aims to accurately describe the facilities and services available to guests and visitors.

April 2019

Bryn Meadows Golf, Hotel & Spa is located at Maesycwmmer, Nr Ystrad Mynach, Caerphilly, CF82 7SN. The geographical location of Bryn Meadows is not level. The Hotel and its facilities have progressively expanded over a course of time, limiting level access.

Web: <https://www.brynmeadows.co.uk>

email: [reservations@brynmeadows.co.uk](mailto:reservations@brynmeadows.co.uk)

Phone: 01495 225590 for updates and general enquiries.

Sat Nav users please use the post code NP12 2RB for directions.

Nearest train station: Hengoed, 2.2 miles away.

Nearest Bus stop: By the Crown pub next to the roundabout, approx 1 mile away, served by Stagecoach.

Local Taxis: Valley taxis 01495 222242 - Relay taxis 01495 422422.

Assistance dogs are welcome. Portable hearing loop on site.

A familiarisation tour can be arranged by advance notice.

The large main car park is sloped but the surface is smooth. The overflow car parks are not level and far from the main facilities. There are four blue badge accessible parking spaces at the hotel and club house end of the facilities. Accessible parking will be available close to the Fairway suite shortly. Call 01495 225590 for updates. At present there are no clearly defined drop-off points but there is space available for vehicle passengers to alight near their desired location.

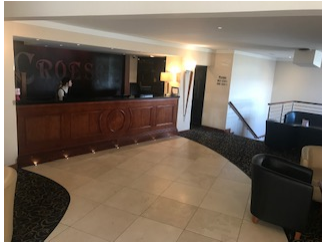


From the upper car park, access into the hotel is via a curved set of stairs with a central double handrail, leading down to a glazed foyer opening into the hotel, fitness spa, bar and restaurant facilities. Access into the hotel and its facilities for disabled people unable to negotiate steps is via a path down the right hand side of the building. This leads to a fire exit leading into the carpeted reception desk area. Currently the fire exit has to be opened manually from the inside and the door width opening is restricted to 65 cm due to a protruding push-bar.



The hotel has 42 bedrooms of which 1 (room 211) is accessible. This room is on the same level as the reception area via a corridor through 2 fire doors. The hotel rooms are on many levels and close to the door of the accessible bedroom there is a stair case descending to a lower level. The door width into the room is 90cm. The room has an ensuite wet-room with shower. The sink is 79cm from the floor and the toilet is 41cm from the floor. There is a 2.5cm high step through sliding doors from the bedroom onto a balcony. Power points in the room are limited and 47cm from the floor. The thermo control is far from the bed and is 108cm from the floor. There is no emergency pull cord in the bedroom or ensuite wet-room. There is an evacuation chair located close to the accessible bedroom and the night porters are trained to use it.





The reception desk is 112cm high and visitors requiring a lower height can use a near by lounge table. The lighting around the reception desk is dim. Access to the spa and fitness centre is along side of the reception desk. There is an accessible toilet on the same level as the reception desk. There is little room inside of this toilet to turn a wheelchair. The height of the toilet is 41cm. The interior fittings are low and there is a fold up baby changing table in this toilet and limited colour contrast.



From the hotel reception area access to the main foyer, Blas bar and dining areas for people unable to negotiate steps is via a portable ramp. This ramp is currently being replaced by a purpose built permanent ramp structure but until then a staff member should be notified and they will provide assistance. This ramp avoids using the three steps to the foyer level. These steps have spotlights built into the facings which reflect on the tiled flooring. There is no hand rail on these stairs.



The Blas bar and restaurant are carpeted throughout. Access to the bar area is level but access to the restaurant from the bar areas is via steps. Food can be served to customers in the upper bar area and notification when booking is preferred. Access to the private restaurant area is limited as is access to the upper suite and kitchen area due to stairs. Steps down from the bar

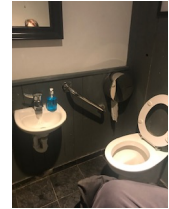


into the restaurant have banisters or hand rails but not all the steps are of equal height. The bar is 110cm high with no lowered section. Bar staff will take orders and serve customers at their tables if requested to do so. Daytime lighting to the bar and restaurant areas is good.





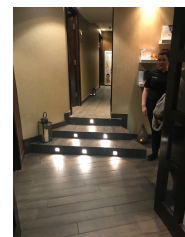
The Winners club house can be entered from two entrances of which both are level. The entrance nearest to the hotel leads directly into the pro golf shop which is sympathetically laid out for easy access. During special events Winners Club can be very busy. The sole accessible toilet is well signed but has basic facilities and no emergency pull cord. The height of the toilet is 41cm. The floor throughout Winners is smooth wood and not slippery unless wet. When busy, the clientele and some furniture can restrict easy access around the club house. The bar is 112cm high and all one level. Food and drinks can be served to clients upon request.



Access to the Fusion Wellness Leisure Club is via a corridor descending from the side of the main hotel reception. This leads down to the reception area for the many facilities which include a well equipped gym, treatment rooms and changing areas (male and female) leading to the swimming pool and Jacuzzi.

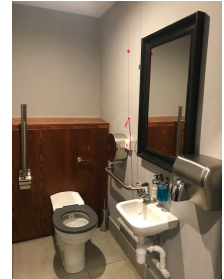


Access to and around all areas of the spa are limited which restricts many disabled visitors from being able to use all of the facilities. The large poolside accessible toilet has the toilet basin on a 20cm high pedestal and the fittings are unconventional. There is no emergency pull cord. Door widths to the ladies and gents changing rooms are 86cm, but space inside is limited. From the therapy room to the treatment rooms there are steps with lights which reflect on the tiled floor. There is no hoist or walk in entry into the pool and wheelchair access is not recommended. The raised poolside jacuzzi has a rubber mat and a grab rail and the lighting in the pool area is good in daylight hours. The tiled poolside area can be wet and slippery. Warning signs are in place.





Entry into the Fairway suite function centre is via a smooth paved path leading to twin wide opening manual glazed doors. The Fairway function facility is located approximately 40 meters from the hotel and closest accessible parking spaces. From the entry



area there is another pair of wide opening glazed manual doors opening to the carpeted well lit bar / and reception area. Access to the ladies, gents and accessible toilet is well signed and to the right of the bar next to the cloak room area. The



accessible toilet is at the end of a well lit wide corridor and has an outward opening door that does not stay open. The toilet is 48cm high and adjacent sink is 74 cm from the floor. There is a pull down baby changing table in the accessible toilet. There is a long wide

balcony running alongside of the bar and main function area accessed by several wide opening glazed double doors. The main large function area is



glazed onto the balcony along one side. There are 2 twin wide opening manual glazed doors from the Bar / reception area into the main function room which is carpeted throughout, except for a laminated dance floor which is centrally located towards the left hand side when entering. Lighting is good and table layouts are set to function users' specifications and the



Fairway suite function centre is entirely level throughout.

An ongoing access policy exists with Bryn Meadows to include equality based staff awareness training and regular upgrades of facilities. However it must be noted that the geographical landscape of Bryn Meadows restricts perfect access to all areas.

Every effort has been taken to ensure the facts contained in this access statement are correct and will be updated accordingly.

